



# INDOFINE Chemical Company, Inc.

121 Stryker Lane, Bldg. 30, Suite 1 • Hillsborough, NJ 08844 • U.S.A.

Phone: (908) 359-6778 • FAX: (908) 359-1179

website: [www.indofinechemical.com](http://www.indofinechemical.com)

e-mail: [chemical@indofinechemical.com](mailto:chemical@indofinechemical.com)

## CERTIFICATE OF ANALYSIS

Catalog Number: 06-725

Product Name: **ISOALANTOLACTONE**  
(Isohelenin)

CAS Number: [470-17-7]

Lot Number: 1605777

Chemical Formula:  $C_{15}H_{20}O_2$

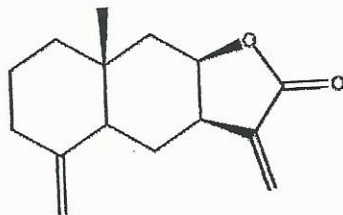
Molecular Weight: 232.32

Appearance: White crystals

Loss on Drying: 1.2%

Storage: Store in a cool, dry place

Purity(HPLC): 99.7%





# INDOFINE Chemical Company, Inc.

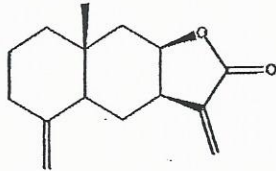
121 Stryker Lane, Bldg. 30, Suite 1 • Hillsborough, NJ 08844 • U.S.A.

Phone: (908) 359-6778 • FAX: (908) 359-1179

website: [www.indofinechemical.com](http://www.indofinechemical.com)

e-mail: [chemical@indofinechemical.com](mailto:chemical@indofinechemical.com)

## HPLC ANALYSIS

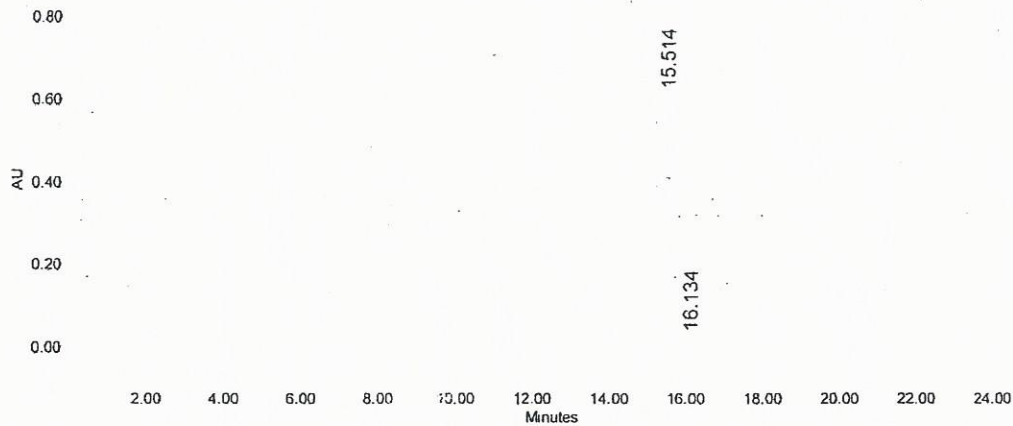


Catalog No.: 06-725  
Product Name: Isoalantolactone  
Lot No.: 1605777

### SAMPLE INFORMATION

Sample Name:	Isoalantolactone	Acquired By:	System
Sample Type:	Unknown	Sample Set Name:	
Vial:	96	Acq. Method Set:	Isoalantolactone
Injection #:	1	Processing Method:	Samples
Injection Volume:	10.00 ul	Channel Name:	205.0nm
Run Time:	25.0 Minutes	Proc. Chnl. Descr.:	PDA 205.0 nm

Auto-Scaled Chromatogram



#### Peak Results

Name	RT	Area	% Area	USP Plate Count	USP Resolution
1	15.514	9290477	99.72	41576.46	
2	16.134	25821	0.28	48963.68	2.07